

INTERNATIONAL MASTER BUSINESS ADMINISTRATION (iMBA)

iMPACT iNSIGHT iNTELLIGENCE iNNOVATION iNTERNATIONAL

This programme develops managerial excellence by cultivating insight through personal development and providing a distinct set of intelligence tools which together allow managers to thrive in the complex business environment of tomorrow. In an immersive international atmosphere, students are trained to tackle business challenges with innovative solutions that integrate a positive environmental and social impact along with the financial bottom line. Throughout the programme, students apply their expanding soft skillset and knowledge base to activities, case studies and a real-world project targeting shared value creation between business and society, preparing them for their careers as future leaders



DR DIETER VANWALLEGHEM,
PROGRAMME DIRECTOR

DURATION
15 months

START DATE
January

TEACHING LANGUAGE
English



PROGRAMME 120 ECTS

ORGANISATIONAL INTELLIGENCE

- Building a Knowledge-Based Organisation
- Managerial Accounting Systems
- Financial Performance of Organisations
- Economic Insights for Business Impact
- Quantitative Methods for Business and Consulting

INTERNATIONAL BUSINESS SETTING

- Risk Analysis and Management
- Managing Global Operations
- International Financial Accounting
- Global Economics
- Global Virtual Teaming

DIGITAL START-UP AND INNOVATION

- Ecological Product & Service Innovation
- Innovation in the Digital Age
- Open Innovation and Crowdsourcing
- Machine Learning for Innovation

INNOVATION AND START-UP CAPITAL FIELD TRIP (EUROPE)

PERSONAL AND GROUP iNSIGHTS

- Leadership through Personal Development
- Human Psyche in Business and Consumer Decision-Making
- Effective Communication for Global Leadership
- Coaching for Organisational Agility
- Managing Cultural Complexity

POSITIVE CORPORATE iMPACT

- Leadership for Impact
- Triple Bottom Line Goal Setting
- Sustainable Supply Chain Management
- Impact Investing

SUSTAINABLE DEVELOPMENT IMPACT TRIP (AFRICA)



**RENNES
SCHOOL
of BUSINESS**

UNFRAMED THINKING



European Business School
Ranking 2018

SPECIALISATIONS

INSIGHT AND MANAGERIAL LEADERSHIP

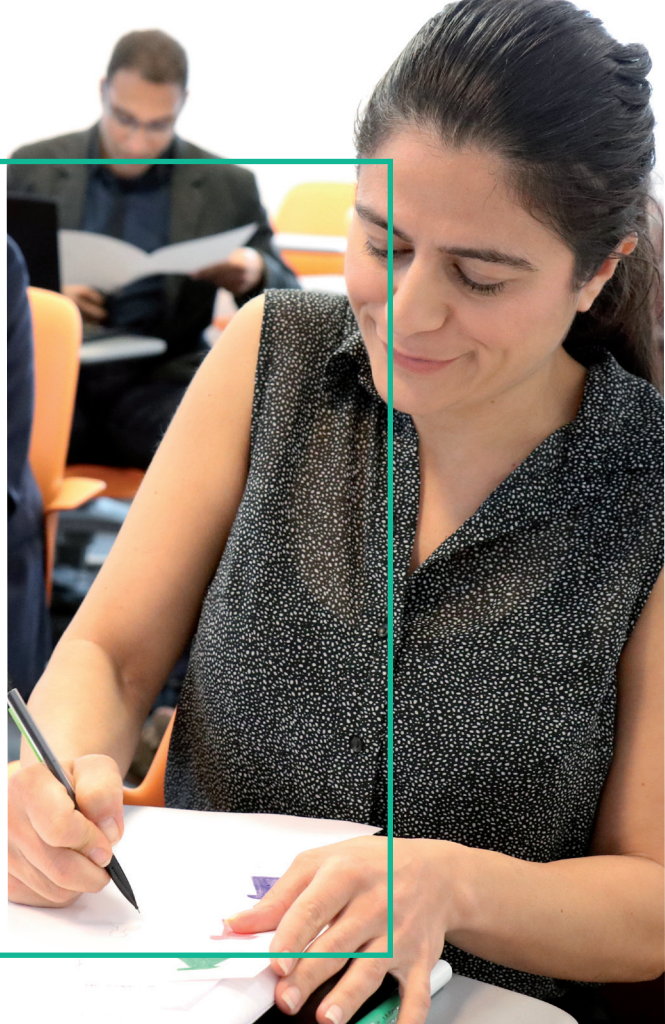
- Managing Human Capital
- Managing for Excellence I
- Managing for Excellence II
- Cultural Complexity
- Big Data Analytics for Business

IMPACTFUL INTERNATIONAL OPERATIONS

- Sustainable Project Management
- Impact and the Supply Chain
- Ecological and Social Innovation
- Managing Cultural Complexity
- Crowdsourcing

INNOVATION AND ARTIFICIAL INTELLIGENCE IN BUSINESS

- AI and Machine Learning
- Python for Business
- Digital Business Models
- Ecological and Social Innovation
- Big Data Analytics for Business



ADMISSION

REQUIREMENTS

- **A strong academic background**
- **Bachelor or equivalent**
- **Minimum 3 years work experience**
- **Two strong managerial references**
- **Motivation letter**
- **Strong quantitative background preferred**

• English proficiency (one of the following):

- TOEFL > 80
- TOEIC > 750
- IELTS > 6.0 (4 skills)
- Cambridge Proficiency Exam > B2
- Pearson Test > 63 (minimum 59 in each section)
- Native Language
- Previous studies taught in English (minimum 2 years)



ACADEMIC CALENDAR

S1: January to April 2021

S2: May to July 2021

S3: September to December 2021

Final Project: up to March 2022

TUITION FEES

€20,000

Apply: <http://apply.rennes-sb.com>

Contact: admissions@rennes-sb.com

This programme will train you as a leader through personal insight and business intelligence in an international context, allowing you to deliver impactful and innovative business solutions for the business world of tomorrow.

You will excel as a leader through a strong awareness of self and others in business contexts, discovering new approaches and methods to problems through Artificial Intelligence, creating shared value between the corporation, the community and a changing geopolitical and global ecosystem.

With participants coming from all over the world, this student-centred journey will use the knowledge of your peers and professors, mixing e-learning components with individual and group work to help you think outside of your habitual frame, creating innovative business solutions.

Two international field trips will take you out of your ordinary learning experience. The Innovation Week will let you examine the latest innovation and entrepreneurship trends and landscape in the thriving ecosystem of a major European capital. Whereas the Impact Week will be a thrilling adventure in which you will be challenged to implement a business solution to one of the Sustainable Development Goals in Africa, already creating impact while you are doing your MBA!



@rennes_sb



Rennes School
of Business



Rennes School
of Business



Rennes School
of Business



@RennesSB